



Welcome to the
Fraser FRONT

100m²



Living Area

3



Bedrooms

None



Garage

Optional



Sun-Lounge

A functional three bedroom semi-detached bungalow.

This practical bungalow design provides a modern and airy, open-plan kitchen/dining room with the option of adding a spacious sun-lounge leading out to a private garden at the rear. Each of the three bedrooms is fitted with built-in wardrobes. Each living space is also kept naturally warm through a renewable energy heating system. The interior of this home is finished throughout in white MDF and fitted with high-quality, low-energy UPVC double-glazed windows as standard. And naturally, every one of our houses comes with a ten-year warranty.

Fraser FRONT

A functional three bedroom semi-detached bungalow.

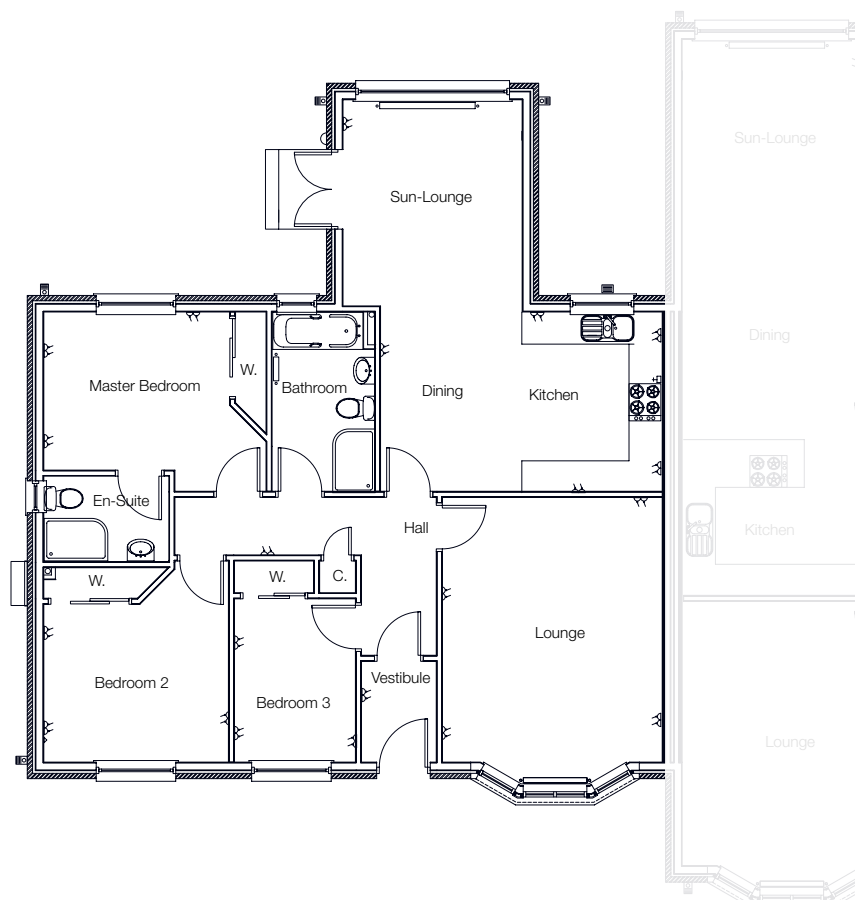
Total living area:

(excluding garage and sun-lounge)
All dimensions are taken to the widest point.

100m²

Ground Floor	m ²
Lounge	4.1 x 5.4
Kitchen / Dining	6.5 x 4.1
Sun-Lounge (Optional)	3.4 x 4.0
Master Bedroom	3.1 x 3.4
En-Suite	1.2 x 2.1
Bedroom 2	3.0 x 4.3
Bedroom 3	2.3 x 3.1
Bathroom	1.8 x 2.2

Ground Floor Plan



A higher standard of home

Modern fitted kitchens

We want this to be your kitchen - that's why we give you a choice of quality German and British-made designs. Discuss your requirements with our designer, and we'll help you choose from the variety of cabinets, worktops, appliances and lighting on offer. The price you pay for your new home includes an allowance towards your kitchen, and you can add to this if you want to upgrade. Utility rooms can be fitted out to match your kitchen design.

Stylish designer bathrooms

For your family bathroom, en-suites and cloakroom, choose from our stylish contemporary range of designs, colourways and fittings. There's also a great selection of wall tiles and fashionable wetwall. The price you pay for your new home includes an allowance towards your bathroom, and you can add to this if you want to upgrade.

High-performance windows and doors

Double-glazed windows are fitted as standard throughout all Colaren property. Windows are high-performance, low-energy UPVC matching the style of each home complimented by external high-performance composite doors with feature haze glass. All doors feature modern, chrome-finish ironmongery.

Custom interior design

All walls will be finished in your choice of either Classic White or Natural Hessian. There will be ample power points in each room, and you can sit down with our designers and decide exactly where you want your sockets, radiators and TV/ satellite points. Central ceiling light pendants come standard in all rooms, with the option to upgrade to LED spotlighting.

Sales Office:

24 Dunshillock Way
Mintlaw
AB42 4AG

01346 512853
sales@colarenhomes.co.uk
colarenhomes.co.uk

  @colarenhomes



The artist's impression and floor plans in this document are not drawn to scale. They are intended for illustration purposes only and may change for example in response to market demand, ground conditions, Local Authority etc. Consequently, they do not form part of any contract. Room layouts are provisional and may be subject to alteration. The external colour finishes and landscaping, as detailed within this impression, are guidelines only and can vary on each development or plot. For clarification, please ask for details.